

Cabinet cooling unit KG 8540-400V



Description

Brand Name: SoliTherm SlimLine Pro

Order Number: 854020001

Colour: RAL 7035

Housing Material: Mild steel, powder coated

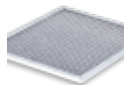
Ingress Protection: IP 56 / Type 12, 3, 3R, 4

Approvals: CE, cURus, cULus

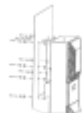
Accessories:



[Cold Air Outlet Duct 8540/62](#)



[Washable Aluminium Filter 8540/60](#)



[Vibration Protection Kit 3](#)

Technical Data KG 8540-400V

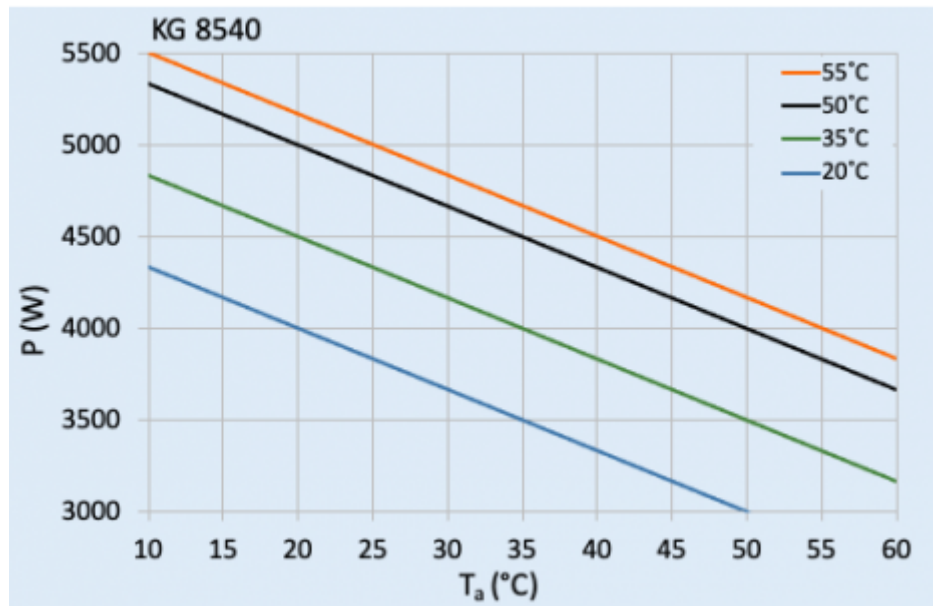
Cooling capacity L35L35:	4.0 kW @ 50 Hz 4.2 kW @ 60 Hz
Cooling capacity L35L50:	3.5 kW @ 50 Hz 3.9 kW @ 60 Hz
Compressor type:	Rotary Piston
Refrigerant / GWP:	R134a / 1430
Refrigerant Charge:	570 g / 20.1 oz.
High / Low Pressure:	32 / 6 bar 460 / 88 psi
Operating Temperature Range:	10°C - 60°C
UL temperature range:	10°C - 60°C
Air flow volume (system / unimpeded):	Ambient: 1000 / 1400 m ³ /h Enclosure: 750 / 1200 m ³ /h
Mounting:	Wall mounted / recessed
Dimension A x B x C (D+E):	1550 x 455 x 270 mm
Weight:	62 kg
Voltage / Frequency:	380-415 V 50 Hz 3~ 400-460 V 60 Hz 3~
Current L35L35:	3.5 A @ 50 Hz 3.7 A @ 60 Hz
Starting current:	15 A
Max. current:	4.8 A
Nominal power L35L35:	1.73 kW @ 50 Hz 2.27 kW @ 60 Hz
Max. power:	3.2 kW
Fuse:	15 A (T)
Max circuit ampacity:	15 A
Short-circuit current rating:	5 kA
Rated current compressor:	3 A
Full load current fans:	1.3 A

Connection:

5 pole terminal for signals
4 pole terminal for power

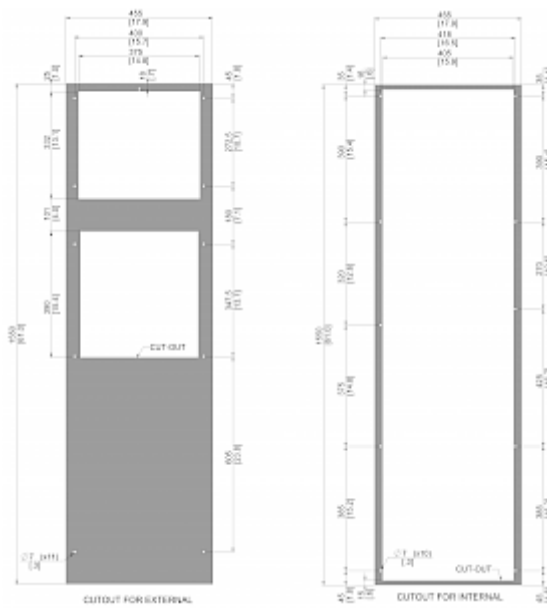
Please click on the graphics to download.
More CAD drawings can be found under [Product Download](#).
> [Overview Product Group Cooling Units - SlimLine Pro](#)

Performance Graph:



click image to enlarge

Cut Out Dimension:



click image to enlarge

Order Information

Box dimensions	1642 x 555 x 299 mm
Gross weight	70 Kg
Taric code	84158200
GTIN (EAN)	5350604390201